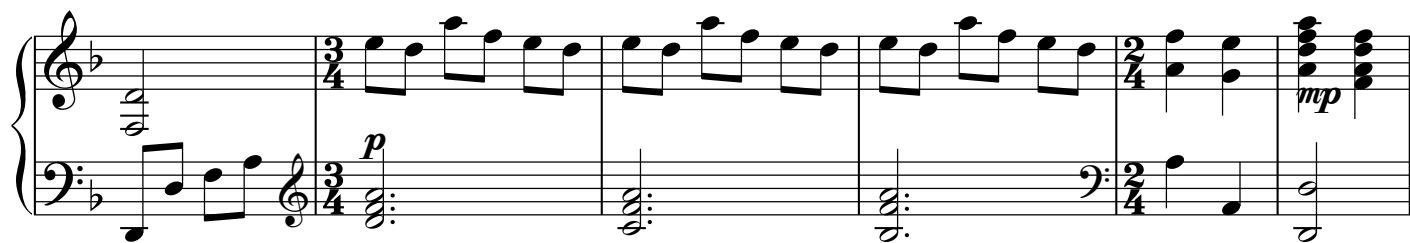
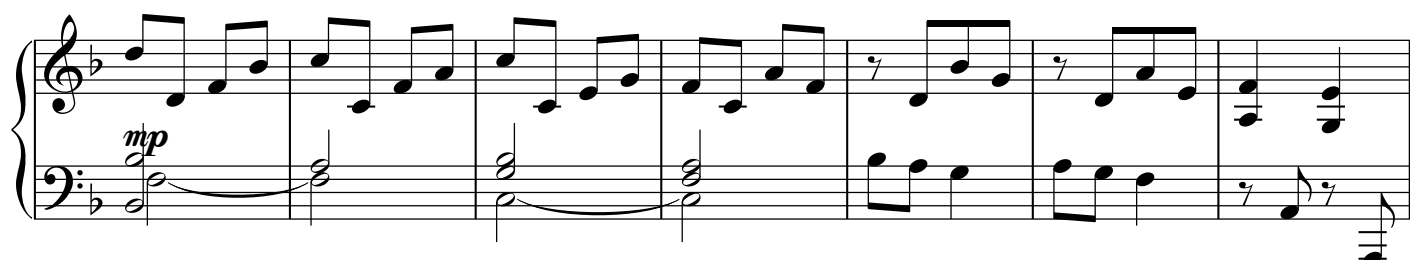
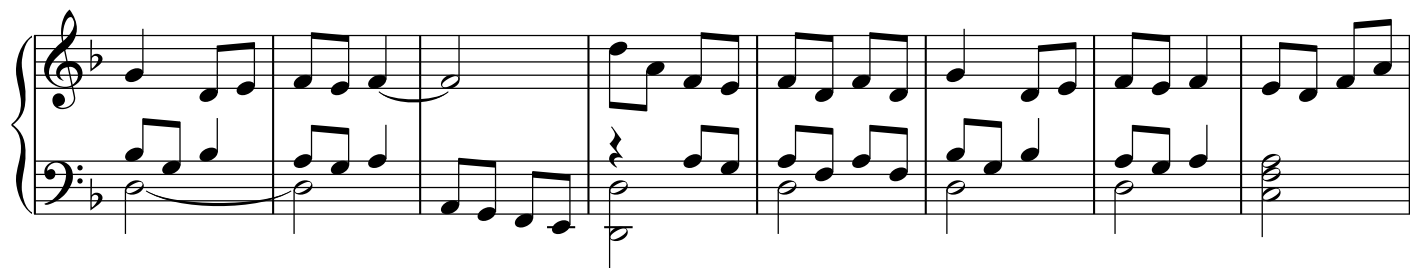


# Не в словах молитвенных речей

Piano  $\text{♩} = 90$



This piano score is written for a piece in B-flat major (one flat) and 3/4 time. It consists of three systems of music, each with a treble and bass staff joined by a brace.

**System 1:** The first system begins with a mezzo-forte (*mf*) dynamic. The right hand plays a continuous eighth-note pattern, while the left hand provides a simple harmonic accompaniment with chords and single notes.

**System 2:** The second system features a crescendo leading to a forte (*f*) dynamic. The right hand continues its eighth-note pattern, which becomes more complex with some accidentals (sharps) in the later measures. The left hand accompaniment also becomes more active, with more frequent chord changes.

**System 3:** The third system concludes the piece. It starts with a piano (*p*) dynamic. The right hand has some rests followed by eighth-note patterns. The left hand features a long, sustained chord in the final measure, marked with a fermata, before ending with a double bar line.