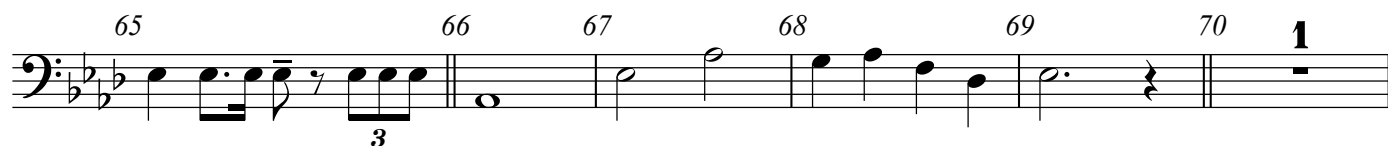


Trombone Придите к Младенцу верные с весельем



Musical score for bass clef, measures 71-99. The key signature is three flats (B-flat, E-flat, A-flat). The score is divided into five systems, each containing measures 71-77, 78-84, 85-91, 92-95, and 96-99 respectively. Measure numbers are written above the staff. Measure 91 is marked with a '1' above the staff. Measure 87 contains a triplet of eighth notes, indicated by a '3' below the staff. Measure 99 ends with a double bar line.

Measures 71-77: Measure 71 is a whole rest. Measures 72-73 are beamed eighth notes. Measures 74-77 are quarter notes.

Measures 78-84: Measure 78 is a quarter note followed by a quarter rest. Measure 79 is a half note. Measures 80-84 are quarter notes.

Measures 85-91: Measure 85 is a half note. Measure 86 is a quarter note. Measure 87 is a triplet of eighth notes. Measure 88 is a quarter note. Measure 89 is a half note. Measure 90 is a quarter note. Measure 91 is a whole rest, marked with a '1' above the staff.

Measures 92-95: Measure 92 is a whole rest. Measures 93-94 are beamed eighth notes. Measure 95 is a quarter note.

Measures 96-99: Measures 96-98 are quarter notes. Measure 99 is a quarter note followed by a quarter rest, ending with a double bar line.